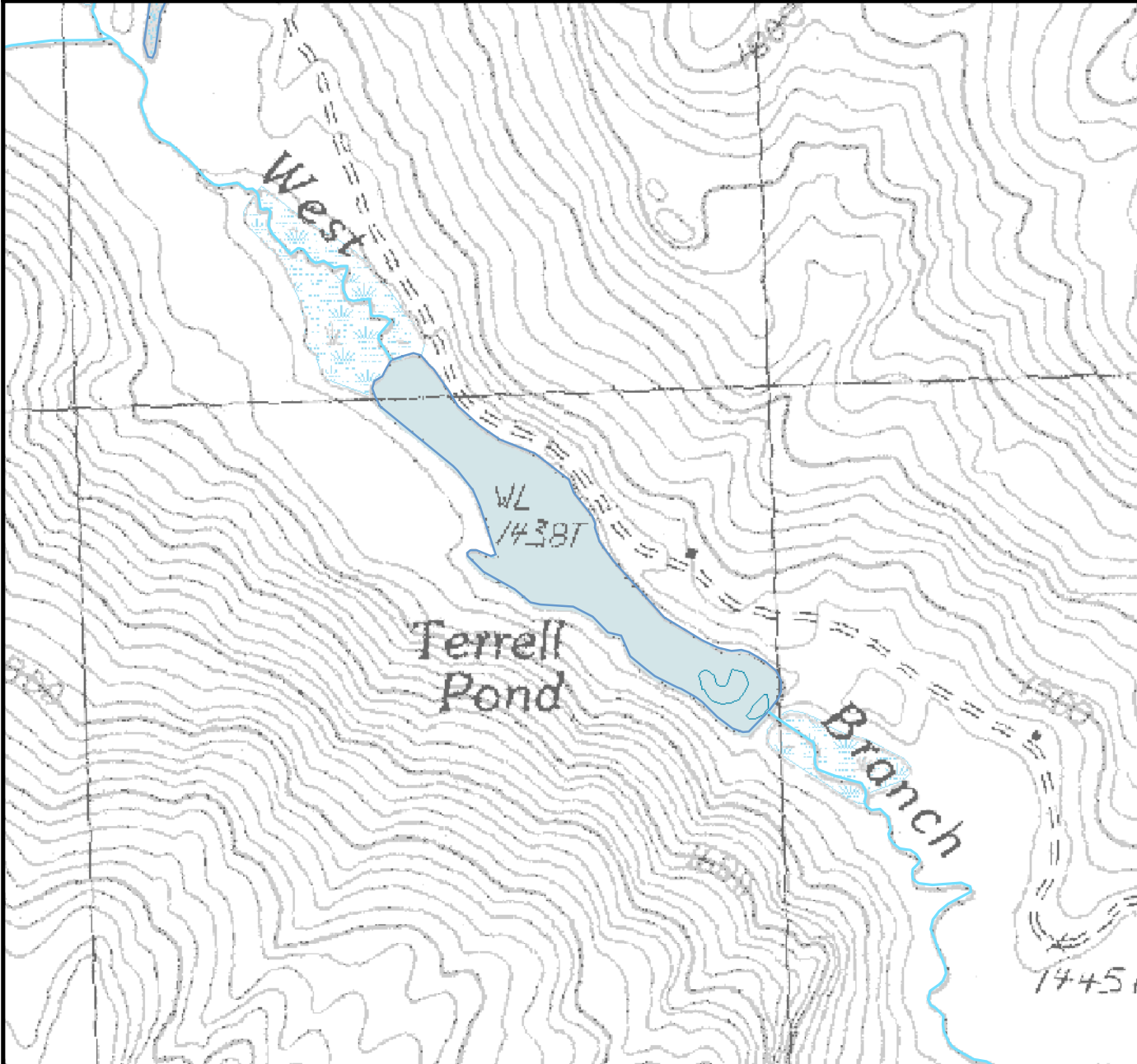


For regulation information, please refer to the NHFGD Freshwater Fishing Digest.

Contact: NHFGD Region 1 (North Country), Lancaster  
E-mail: [reg1@nhfgd.org](mailto:reg1@nhfgd.org) Phone: 603-788-3164

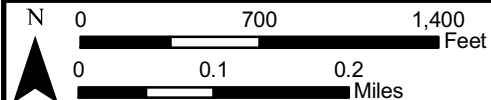
# TERRELL (WEST BR) POND, Pittsburg



<b>FISHERY:</b> Coldwater	<b>ACRES:</b> 20
<b>TROPHIC LEVEL:</b> MESO	
<b>AVG DEPTH:</b> 3	<b>MAX DEPTH:</b> 8
<b>SPECIES:</b> EBT	
ADDITIONAL INFO: * Fly-fishing only	
ACCESS: gravel road accessible by non-conventional vehicles	

Contact NH Dept of Safety, Marine Patrol Bureau for information regarding waterbody restrictions (603) 293-0091

- Access site (NHOEP)
- ~ Bathymetric contour
- Bathymetry (depth in feet)
  - Less than 10
  - 10 to 20
  - 20 to 30
  - 30 to 40
  - 40 to 50
  - Greater than 50
- Bathymetry data provided by the NH Department of Environmental Services, Watershed Mgt Bureau
- Town boundary
- Primary Route
- Road or Street
- - - Trail or other
- ~ Stream or Shoreline
- Surface Water
- Wetland
- Conservation Land
- Access Restricted or Unknown



Most data presented on this map represent stock data sets obtained from NH GRANIT, Complex Systems Research Center, UNH. CSRC, NHOEP, NHFGD and the cooperating agencies make no claim as to the validity or reliability or to any implied uses of these data. NOT FOR NAVIGATION.

Directions: